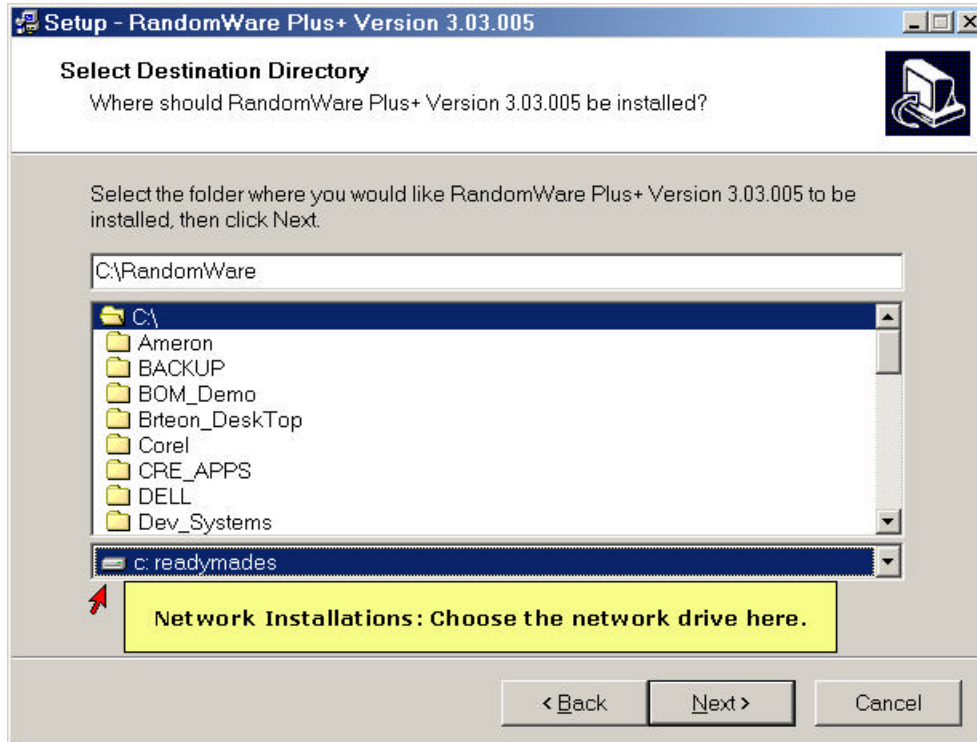


# random ware

## RANDOM SELECTION SOFTWARE

### RandomWare Network Installations

The installation will allow you to install the system on a network drive of your choice. Start the installation from a workstation with access to the network drive.



### Current Installations

Please note: If the program is already installed on a local disk, simply drag and drop the entire installation folder to the network and create shortcuts on each machine that needs to access the software.

It's critical that all workstations access the network using the same drive letter, e.g., **G:** or **N:**. The program does not allow duplicate Directory file names regardless if the files are in different folders or on different drives.

As a convenience, the previously opened RandomWare Directory is always presented as the "last directory" and can be opened directly when the program starts. If two workstations access the installation folder by different drive letters, a conflict in Directory file names will occur. Consider, for example, two workstations, Workstation #1 (ws-1) & Workstation #2 (ws-2) that access the network drive as G and N respectively. When ws-1 closes a RandomWare Directory, for example, the sample Directory, Dir\_Sample, the system will record **G:**\RandomWare\Dir\_Sample as the last Directory, however, **G** is not a drive accessible by ws-2 and the file cannot be opened when RandomWare is started from the other workstation, ws-2.

### Local Scratch Folder

Using Windows Explorer, create a RandomWare folder on the local drive for each workstation. The folder can be named RandomWare or any name appropriate for your application. You must register the folder with RandomWare when the program is first executed from each workstation. For network installations, the program uses this folder for temporary scratch files and a diagnostics file. The diagnostic file is named dw and has no file extension. This diagnostics file is emptied (the file is

truncated) and tracks the details of each new session. The file is used primarily as a software development tool and the code that generates the output is not removed prior to its release of the program. The local scratch folder is registered through the Network tab page in System Options. The System Options module is accessed through the **Other Data** menu at the top of the window when the program starts.

#### Desktop Short Cuts

When the installation is complete, copy the shortcut from the desktop of the first installation to each workstation that requires access to the program, or easily create a new shortcut on the desktop of each workstation.

#### Create a Desktop Short Cut

For the steps outlined below, assume the network installation is **L:\RandomWare\RandomWare.exe**.

To create a shortcut:

- Right click on the desktop.
- Choose **New**.
- Choose **Shortcut**.
- Use **Browse** from the **Create Shortcut** control dialog box to locate the program installation folder and then the program executable file: RandomWare.exe.
- Click the OK button to finish.
- In Windows 98 **L:\RandomWare\RandomWare.exe** will appear in the edit box with the caption **Command line:**
- In Windows 2000 **L:\RandomWare\RandomWare.exe** edit box with the caption **Type the location of the item**.
- Press Next.
- RandomWare.exe will display as the name of the shortcut. Rename the shortcut to suit your application of the program.
- Press Finish.

Double click the shortcut to start the program and before anything else, the first requirement is to register the local folder created on the workstation's local drive as previously explained.

To register the local folder:

- Click the **Other Data** option from the menu bar at the top of the program window.
- Choose **System Options** (near the bottom of the menu).
- Click the **Network** page tab.
- Click the Browse button and locate the folder on the workstation's local drive that was created using Windows Explorer. When the folder is located press the OK button.
- Click OK from the System Options control.
- Finished.

Finally, register the installation folder for each workstation.

To register the folder:

- Start the program from the workstation.
- Click the **Utils** option from the menu bar at the top of the program window.
- Choose the **Register New Installation Folder** option.
- Using the Browse feature, locate the network drive and click the installation folder so it appears open.
- Click OK.

This release does not support multiple simultaneous users. If the program is currently in use, subsequent users are not allowed access – they are provided a message that states the program is

currently in use and should try again later. Version 3.04 will provide secure access to multiple users simultaneously.